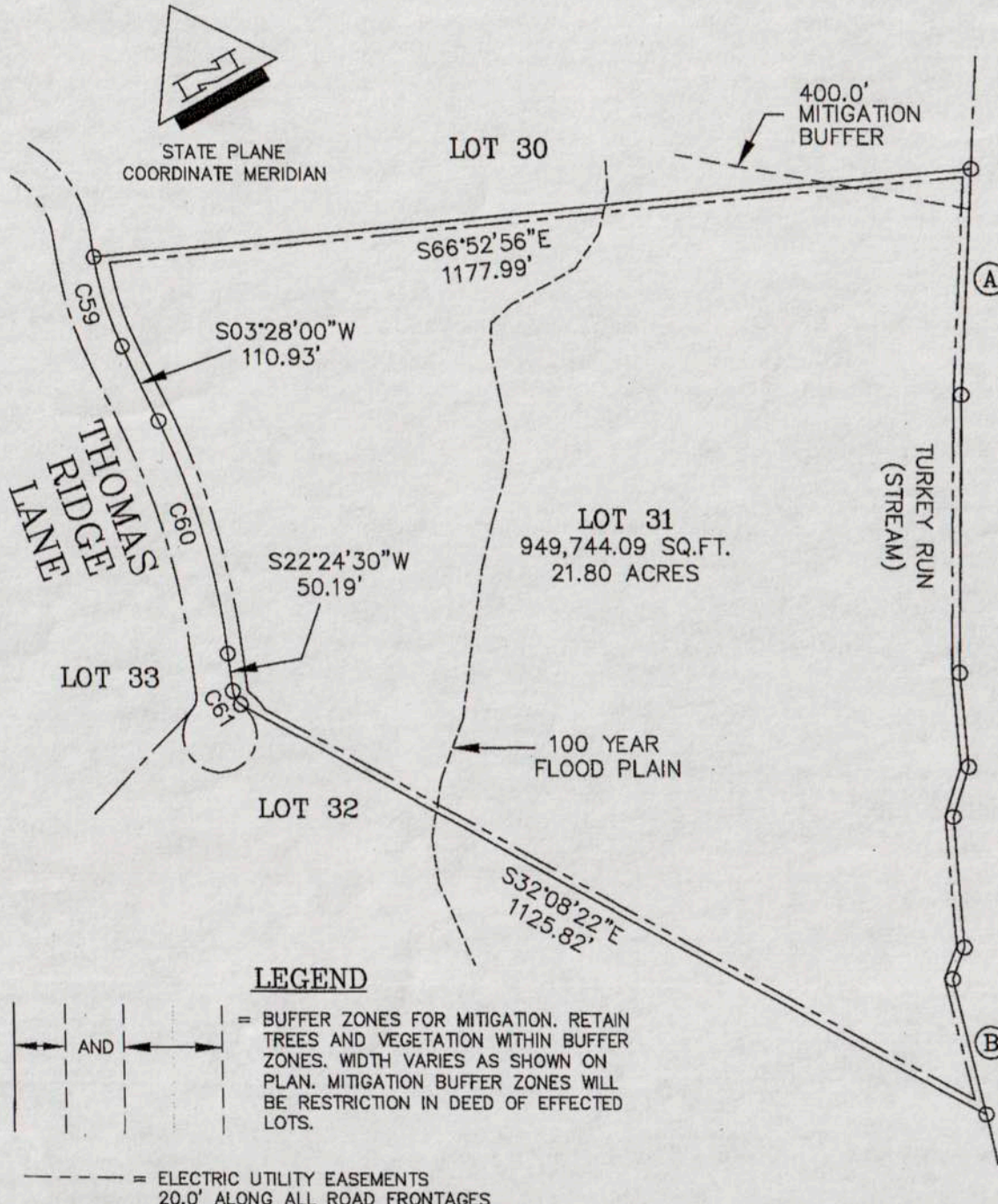


62a.64

"THE FARMS AT TURKEY RUN"
 SUBDIVISION PLAT
 TAX MAP 114, PARCEL 67A, LOT 31
 SCOTTSVILLE MAGISTERIAL DISTRICT
 ALBEMARLE COUNTY, VIRGINIA
 FEBRUARY 5, 2008



TURKEY RUN
 STREAM COURSES
 (A) THROUGH (B)

LENGTH	BEARING
(A) 301.60	S32°00'00"W
370.00	S30°00'00"W
125.00	S24°30'00"W
70.00	S46°15'00"W
175.00	S25°00'00"W
45.00	S49°30'00"W
(B) 184.33	S16°25'00"W

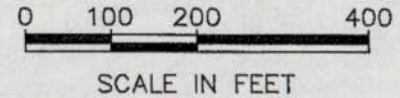
TMP 114-67
 PARCEL 1
 MURCIELAGO LLC
 D.B. 2218 P.296
 D.B. 1806 P.626
 D.B. 1670 P.444
 MURCIELAGO LLC
 ZONED RA

METES AND BOUNDS
 CURVE TABLE

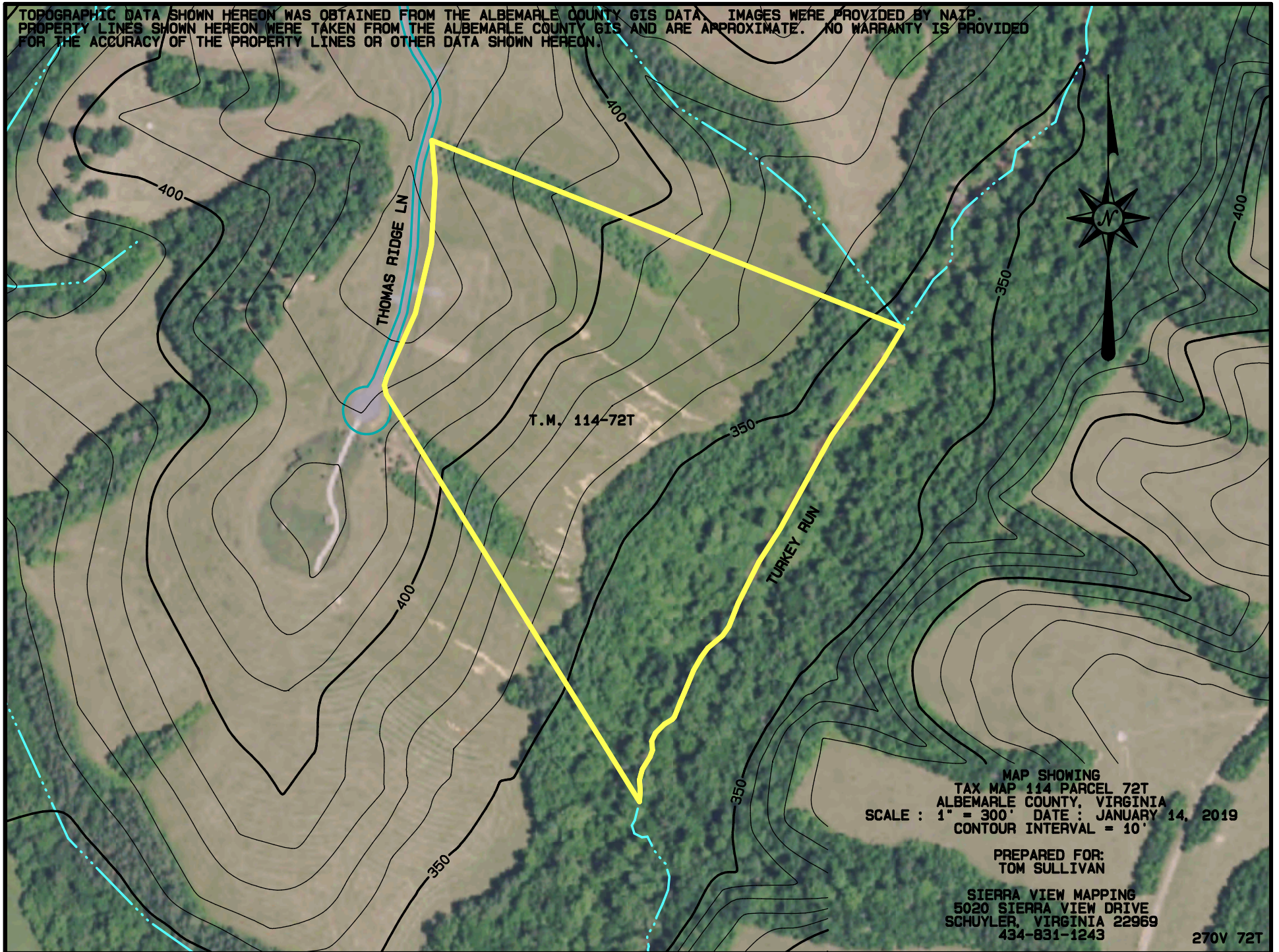
CURVE	LENGTH	RADIUS	TANGENT	DELTA
C59	125.17	420.00	63.05	17°04'30"
C60	322.32	974.97	162.64	18°56'30"
C61	21.03	25.00	11.18	48°11'23"

LEGEND

- AND = BUFFER ZONES FOR MITIGATION. RETAIN TREES AND VEGETATION WITHIN BUFFER ZONES. WIDTH VARIES AS SHOWN ON PLAN. MITIGATION BUFFER ZONES WILL BE RESTRICTION IN DEED OF EFFECTED LOTS.
- = ELECTRIC UTILITY EASEMENTS
 20.0' ALONG ALL ROAD FRONTAGES
 10.0 ALONG ALL SIDE AND REAR LINES



TOPOGRAPHIC DATA SHOWN HEREON WAS OBTAINED FROM THE ALBEMARLE COUNTY GIS DATA. IMAGES WERE PROVIDED BY NAIP. PROPERTY LINES SHOWN HEREON WERE TAKEN FROM THE ALBEMARLE COUNTY GIS AND ARE APPROXIMATE. NO WARRANTY IS PROVIDED FOR THE ACCURACY OF THE PROPERTY LINES OR OTHER DATA SHOWN HEREON.



MAP SHOWING
TAX MAP 114 PARCEL 72T
ALBEMARLE COUNTY, VIRGINIA
SCALE : 1" = 300' DATE : JANUARY 14, 2019
CONTOUR INTERVAL = 10'

PREPARED FOR:
TOM SULLIVAN

SIERRA VIEW MAPPING
5020 SIERRA VIEW DRIVE
SCHUYLER, VIRGINIA 22969
434-831-1243

270V 72T