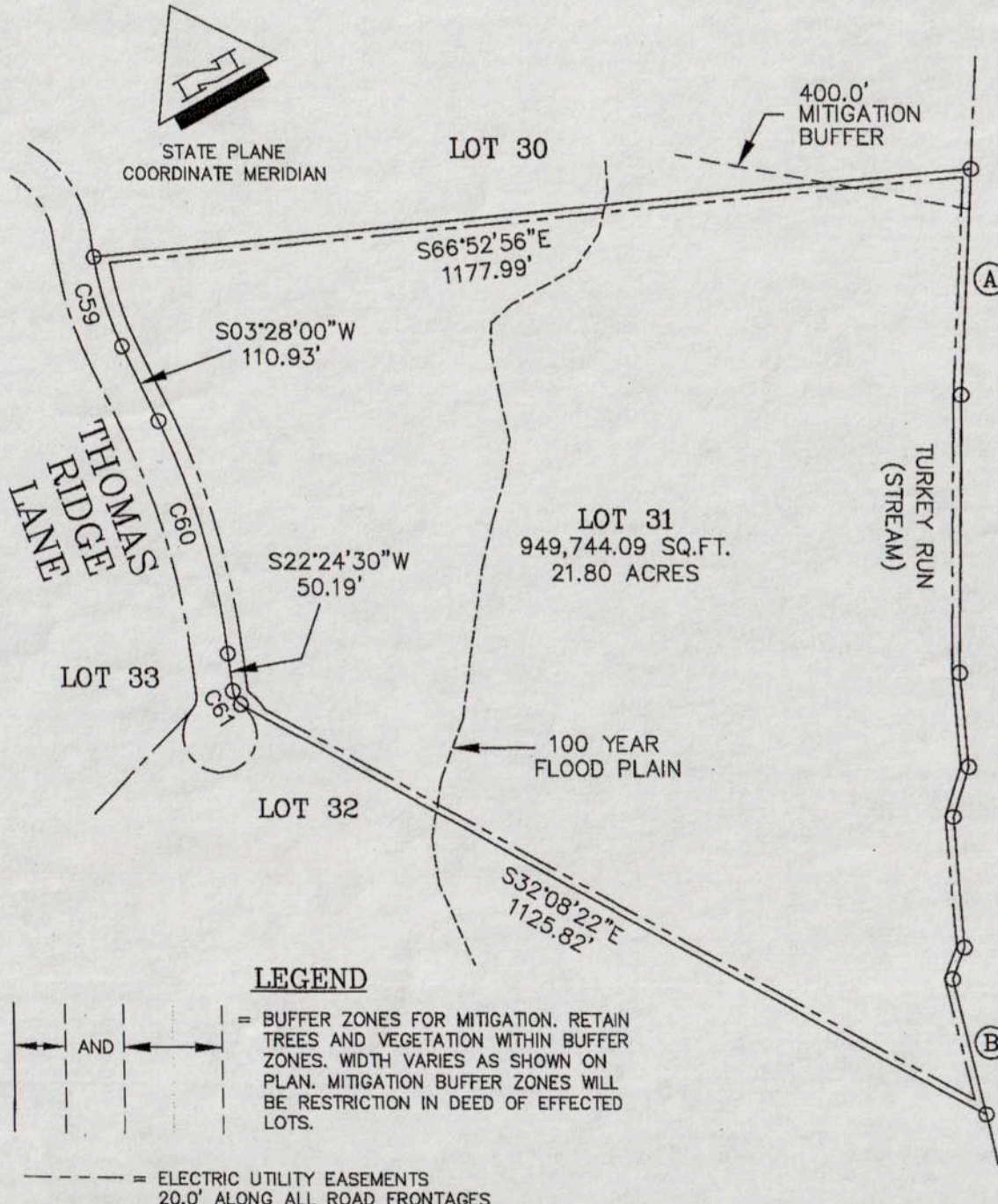


62a.64

"THE FARMS AT TURKEY RUN"  
 SUBDIVISION PLAT  
 TAX MAP 114, PARCEL 67A, LOT 31  
 SCOTTSVILLE MAGISTERIAL DISTRICT  
 ALBEMARLE COUNTY, VIRGINIA  
 FEBRUARY 5, 2008



TURKEY RUN  
 STREAM COURSES  
 (A) THROUGH (B)

LENGTH	BEARING
(A) 301.60	S32°00'00"W
370.00	S30°00'00"W
125.00	S24°30'00"W
70.00	S46°15'00"W
175.00	S25°00'00"W
45.00	S49°30'00"W
(B) 184.33	S16°25'00"W

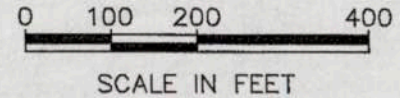
TMP 114-67  
 PARCEL 1  
 MURCELAGO LLC  
 D.B. 2218 P.296  
 D.B. 1806 P.626  
 D.B. 1670 P.444  
 MURCELAGO LLC  
 ZONED RA

METES AND BOUNDS  
 CURVE TABLE

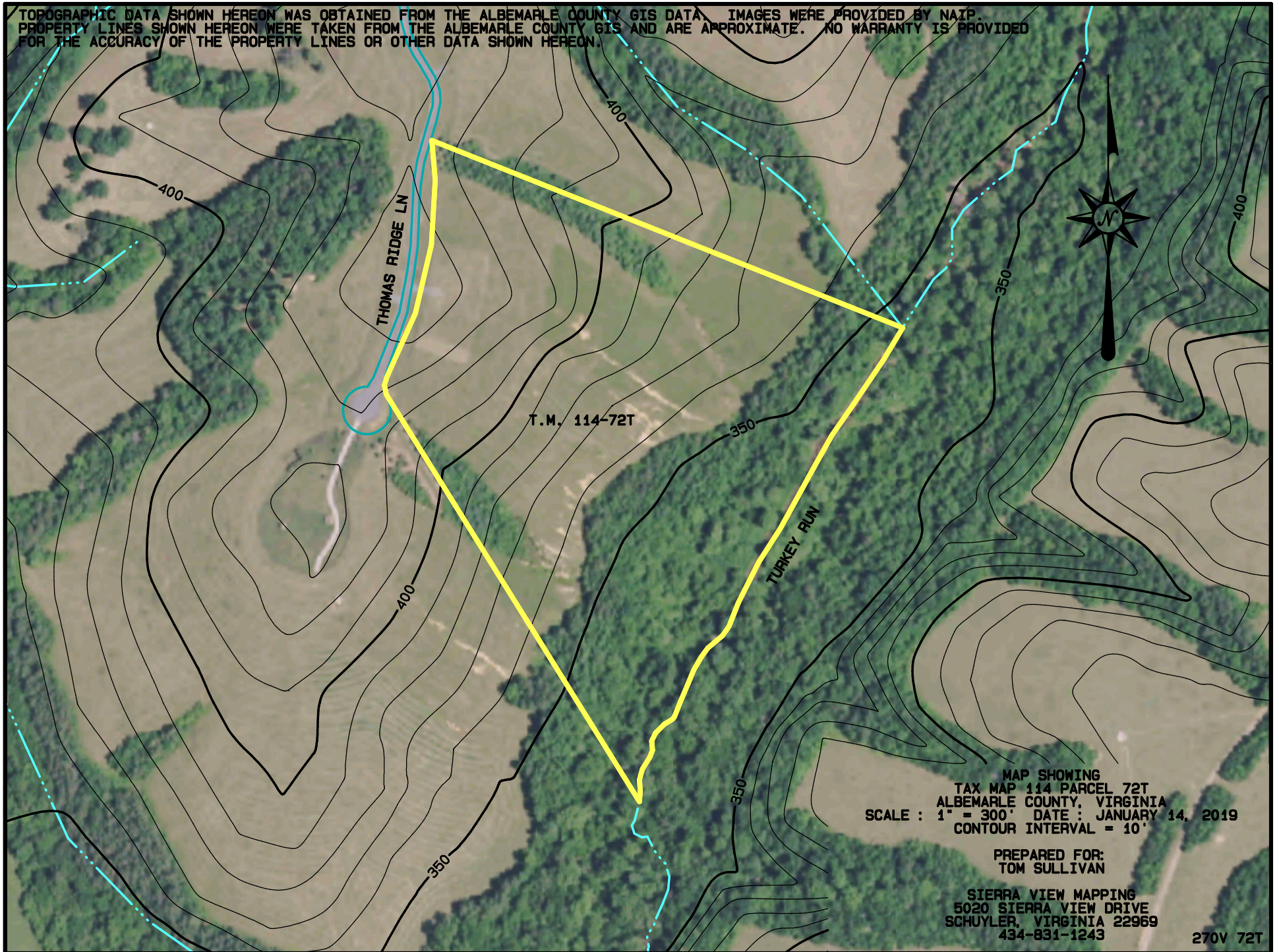
CURVE	LENGTH	RADIUS	TANGENT	DELTA
C59	125.17	420.00	63.05	17°04'30"
C60	322.32	974.97	162.64	18°56'30"
C61	21.03	25.00	11.18	48°11'23"

LEGEND

- AND = BUFFER ZONES FOR MITIGATION. RETAIN TREES AND VEGETATION WITHIN BUFFER ZONES. WIDTH VARIES AS SHOWN ON PLAN. MITIGATION BUFFER ZONES WILL BE RESTRICTION IN DEED OF EFFECTED LOTS.
- = ELECTRIC UTILITY EASEMENTS  
 20.0' ALONG ALL ROAD FRONTAGES  
 10.0' ALONG ALL SIDE AND REAR LINES



TOPOGRAPHIC DATA SHOWN HEREON WAS OBTAINED FROM THE ALBEMARLE COUNTY GIS DATA. IMAGES WERE PROVIDED BY NAIP.  
PROPERTY LINES SHOWN HEREON WERE TAKEN FROM THE ALBEMARLE COUNTY GIS AND ARE APPROXIMATE. NO WARRANTY IS PROVIDED  
FOR THE ACCURACY OF THE PROPERTY LINES OR OTHER DATA SHOWN HEREON.



MAP SHOWING  
TAX MAP 114 PARCEL 72T  
ALBEMARLE COUNTY, VIRGINIA  
SCALE : 1" = 300' DATE : JANUARY 14, 2019  
CONTOUR INTERVAL = 10'

PREPARED FOR:  
TOM SULLIVAN

SIERRA VIEW MAPPING  
5020 SIERRA VIEW DRIVE  
SCHUYLER, VIRGINIA 22969  
434-831-1243

270V 72T