

TM 123 - 34

Iron 5' N. of  
12" Black Oak

N 22° 18' 30" E  
300.00'

Iron

COURSES ALONG R-W OF ST. RT. 618  
FROM A TO B

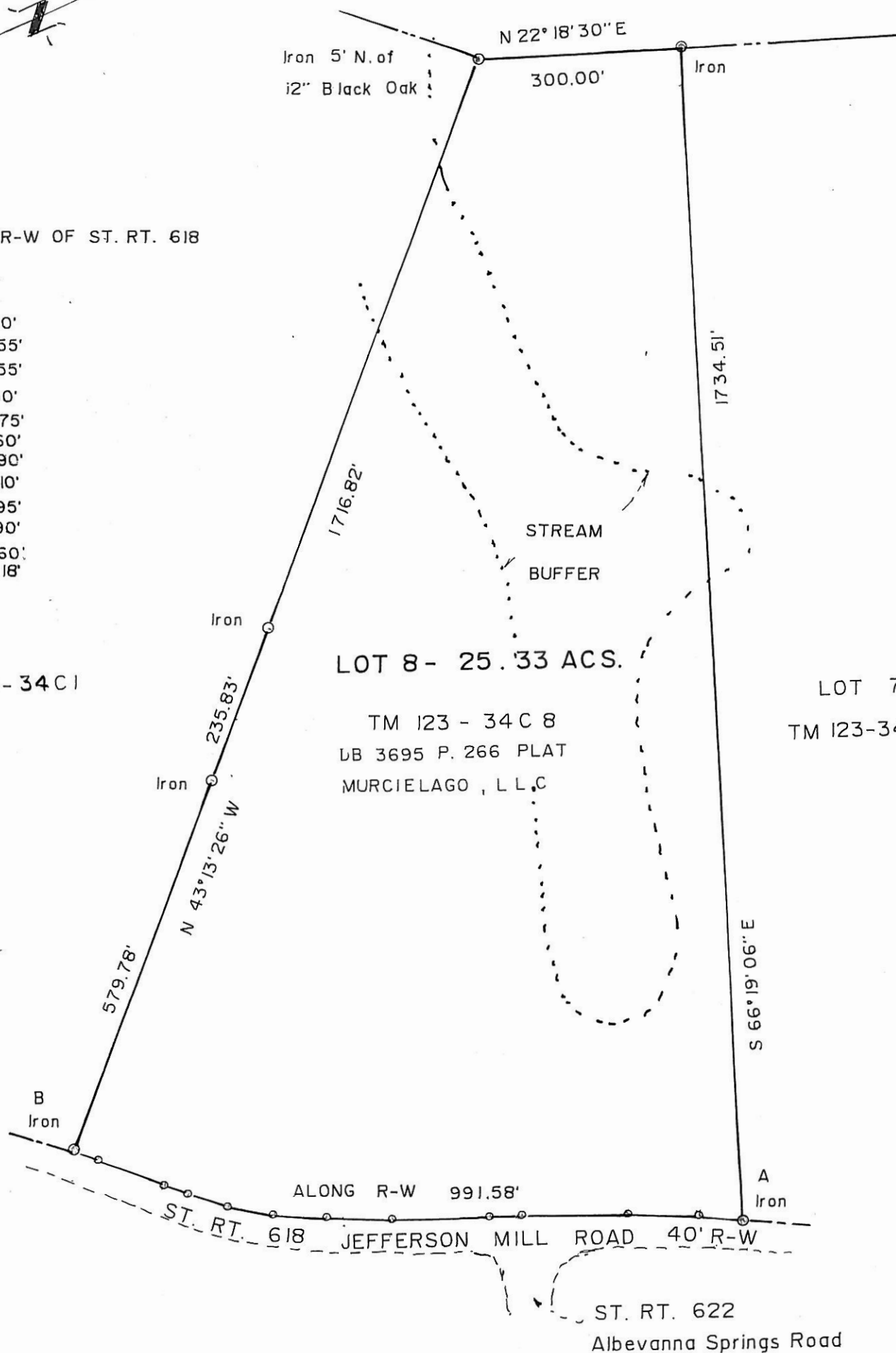
S 32° 34' 30" W	59.20'
S 29° 42' 00" W	108.55'
S 26° 43' 30" W	156.55'
S 26° 29' 40" W	45.30'
S 25° 51' 00" W	143.75'
S 27° 21' 20" W	95.60'
S 31° 03' 50" W	74.90'
S 36° 09' 40" W	64.10'
S 40° 58' 50" W	60.95'
S 43° 58' 00" W	38.90'
S 44° 23' 00" W	105.60'
S 43° 38' 20" W	38.18'

TM 123-34C1

LOT 8 - 25.33 ACS.

TM 123 - 34 C 8  
LB 3695 P. 266 PLAT  
MURCIELAGO, L.L.C.

LOT 7  
TM 123-34C7

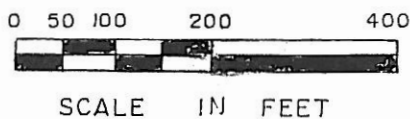


PLAT SHOWING - LOT 8

" THE FARMS of JEFFERSON MILL "

SCOTTSVILLE MAGISTERIAL DISTRICT  
ALBEMARLE COUNTY, VIRGINIA

W. MORRIS FOSTER  
LAND SURVEYOR  
NELLYSFORD, VA.



OCT. 26, 2010